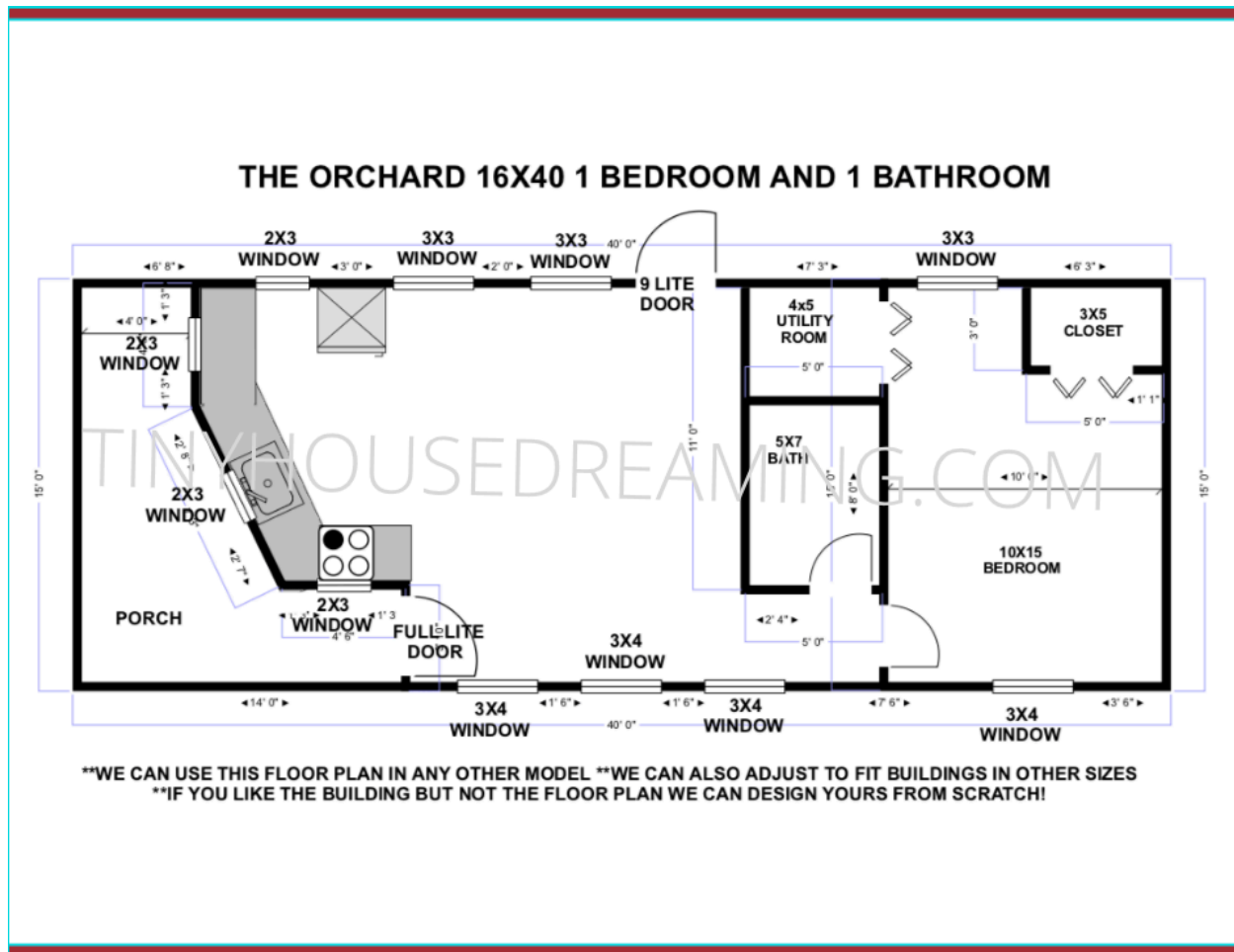




## THE ORCHARD 16X40 TINY HOME

We can build this style in any size we offer up to 16x56!

You can choose this floorplan or make any custom changes you like!



## FINISHED PREMIUM PACKAGE

1 BED 1 BATH LOFTED HOME WITHOUT STAIRS

**\$70,716.03**

## UNFINISHED INTERIOR SHELL

**\$36,744.84**

## WHAT'S INCLUDED W/ THIS PREMIUM BUILDING?

FINISHED PREMIUM BUILDING AS SHOWN

1 – FULL LITE DOOR

1 – 9 LITE DOOR

4 – 3X4 DOUBLE PANE INSULATED VINYL WINDOWS

4 – 2X3 DOUBLE PANE INSULATED VINYL WINDOWS

3 – 3X3 DOUBLE PANE INSULATED VINYL WINDOWS

4 – INTERIOR DOORS

3 – 220 AMP OUTLETS

2 – HARDWIRED SMOKE DETECTORS

44 FEET OF FINISHED INTERIOR WALLS

### **THE FAMOUS PREMIUM PACKAGE INCLUDES**

**THE ELECTRICAL PACKAGE** – INC. LED RECESSED CAN LIGHTS, OUTLETS, SWITCHES, & UPGRADED 200 AMP BREAKER PANEL

**THE INSULATION PACKAGE** – CLOSED CELL SPRAY FOAM UNDER THE FLOOR, RESIDENTIAL BATT INSULATION IN THE WALLS AND CEILING (YOU CAN UPGRADE TO CLOSED CELL SPRAY FOAM IN THE ENTIRE BUILDING)

**FINISHED INTERIOR WALLS** - INCLUDES PAINT AND TRIM

**PTAC HEATING AND COOLING UNIT**

**RESIDENTIAL FRAMING UPGRADE** – 16" ON CENTER, BUILT TO RESIDENTIAL CODE. FLOOR JOISTS 12" ON CENTER FOR BUILDINGS OVER 40 FEET LONG





## Professional Expertise

If you would like a completely customized project and don't feel you have the time or skills to do the design and drafting work yourself, this is where we can best serve you. We can help you customize your new home for free! If you have a specific design in mind, a general idea of what you want, or have no clue and don't know where to start, we can help! We can show you some templates of other projects we have done to give you some great ideas on where to get started. Are you ready? We would love to help you get started building your dream!

**EZ PORTABLE BUILDINGS 314-226-7261 - RICK**

**636-638-1320 – OFFICE**

**[WWW.TINYHOUSEDREAMING.COM](http://WWW.TINYHOUSEDREAMING.COM)**





## PREMIUM PACKAGE FINISHED INTERIOR

Give your dream the space to thrive and the power to come alive in a fully finished climate-controlled premium package building. Customize the interior of ANY EZ Storage Building with electric, insulation, LED Lighting, HVAC and More.

### The Premium Package Building includes:

#### FRAMING UPGRADE

- Loft Joist 16" on center
- Trusses 16" on center

#### INSULATION

- R-13 in the walls and ceiling
- 1.5" closed cell spray foam under flooring

#### HVAC

- PTAC Unit (1 Year Warranty)

#### ELECTRICAL WIRING

- 100 AMP Breaker Panel
- 4-14 LED Can Lights (depending on size)
- 8-18 110 Volt Outlets (depending on size)
- Exterior Outlet
- Exterior Light

#### INTERIOR PAINT

- Choose your paint for Wall, Trim Color, and Ceiling



Whatever your purpose... Whatever your dream...

## POWER YOUR PASSION



ezpb.com